

Tonmind PA System Pro

User Manual V1.0.4



Xiamen Tonmind Technologies Co., Ltd.

Contents

Overview	3
About Tonmind PA System Pro.....	3
Main functions.....	3
IP Audio Endpoints.....	3
Server Setting.....	5
Connect PA System Pro Client	5
Create Pro Client Accounts.....	5
Create SIP Accounts.....	6
Setup IP Audio Devices.....	8
Setup IP Phone and Soft Phone.....	10
Setup Paging Zones.....	10
Zones Control.....	11
Voice Source Option.....	11
Settings of schedule, SIP trunk and RTP.....	12
Local audio management	13
How to Get License Key.....	14

Overview

About Tonmind PA System Pro

Tonmind PA System Pro is one of Tonmind software solution, include Pro server and Pro client, support multi clients log in and control. It has IP public address system, SIP voice, RTP multicasting modules integrated, it provides an all-in-one unified IP audio solution. The Tonmind PA System Pro provides centralized IP audio endpoints management, public address, background music, intercom, emergency broadcasting, audio conferencing, IP phone call and more features. It is suitable for public safety, secure community, industry, transportation, school, health, Production Studios, Commercial & industrial Buildings and more application scenarios.

The main functions

The main functions of Tonmind PA System Pro is as below, Tonmind is keeping to update system as customer requirement and adopt new technology.

Multi clients log in and control

Divide regions into zones per needs

Support SIP extension broadcast in different zones and each endpoint

The internal extension can make SIP calls.

Initiate calls using SIP phones.

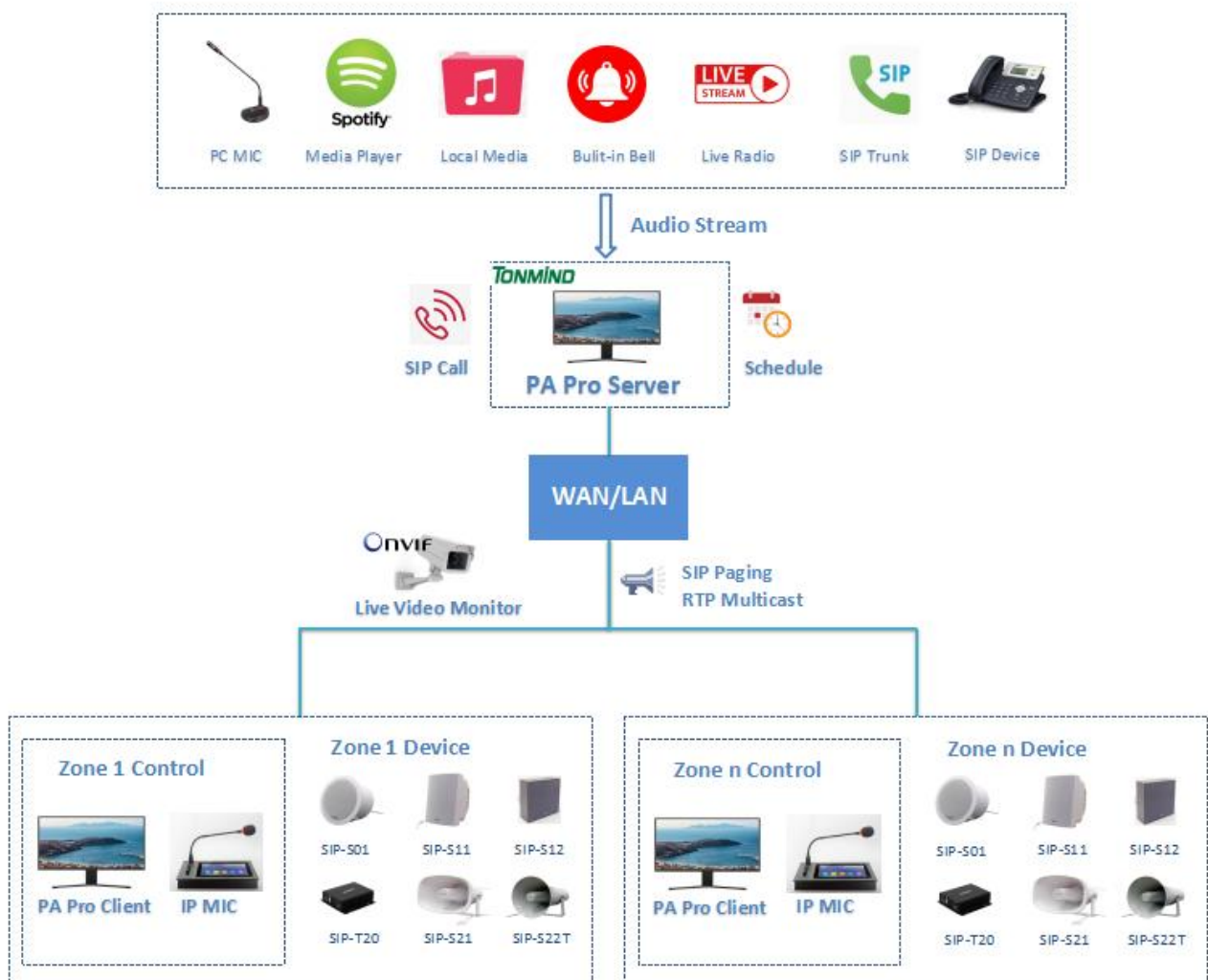
Support LAN RTP multicast broadcast

SIP trunk

IP Audio Endpoints

The following IP audio endpoints can be integrated into Tonmind PA System Lite:

1. Tonmind series IP SIP speakers, SIP paging adapter, SIP microphone
2. IP phones and soft phones
3. SIP devices



Server Setting

After click to start Pro server, then go into the page as below.

- General Language and run at start up and Port option, also HTTP API enable
- System Check the IP address, SIP port, trunk port , audio codec and RTP port
- About Check system version and contact information

General	Language	English
System	Run at start up	<input checked="" type="checkbox"/>
About	Login port	9190
	Http API port	9191
	<input type="checkbox"/> Http API	<p><code>http://192.168.5.220:9191/action?zone=3000&operation=start</code></p> <p><code>http://192.168.5.220:9191/action?zone=3000&operation=stop</code></p>
Save		

Connect PA System Pro Client

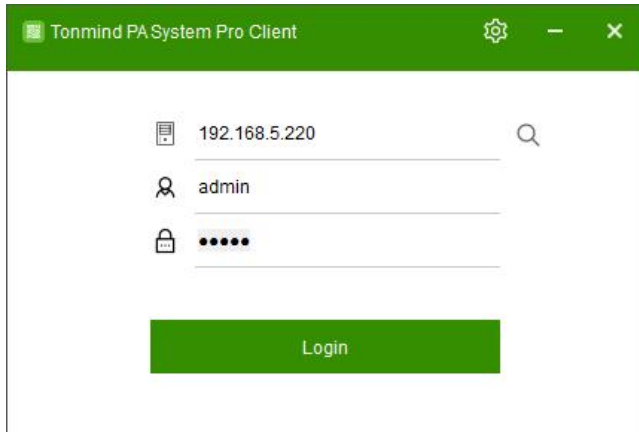
For using Tonmind PA System pro to manage zones and control device like speakers and IP phone, the following settings need to be done.

Create Pro Client Accounts

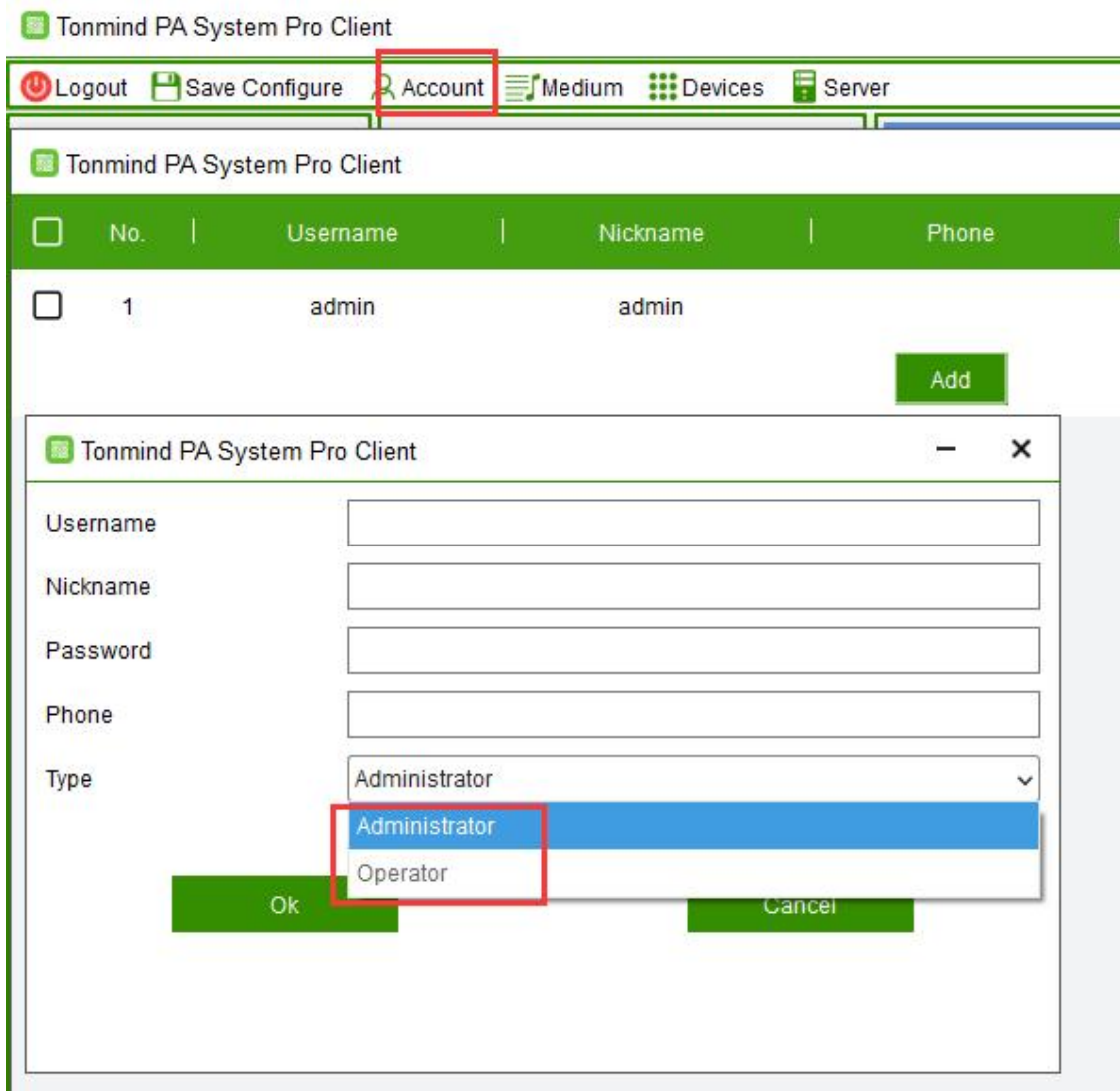
After start Pro server, there is a default client account as below, login in with this account.

Name: admin

Password: admin



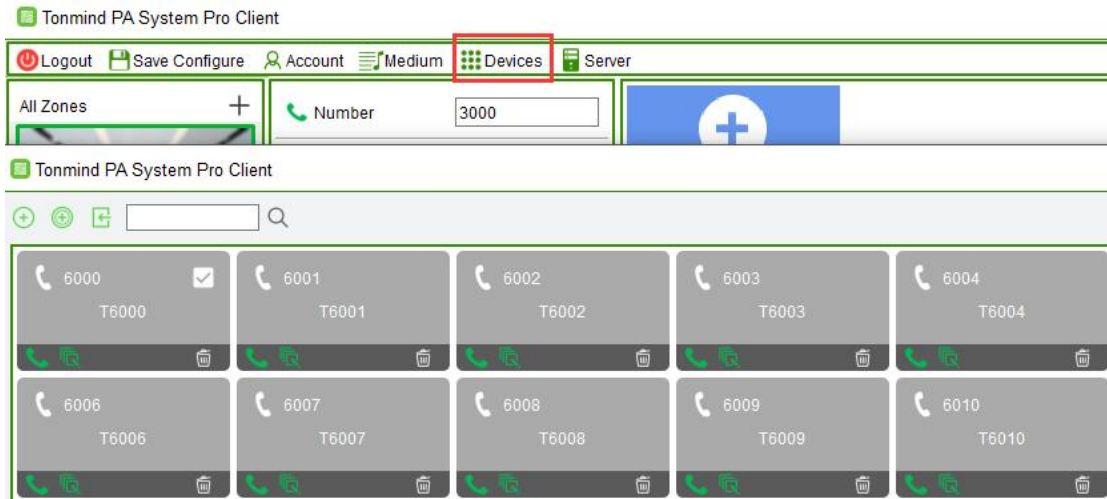
And when more clients account required, click account to create new account. There are two account type : Administrator and Operator with different authorized right to manage system.




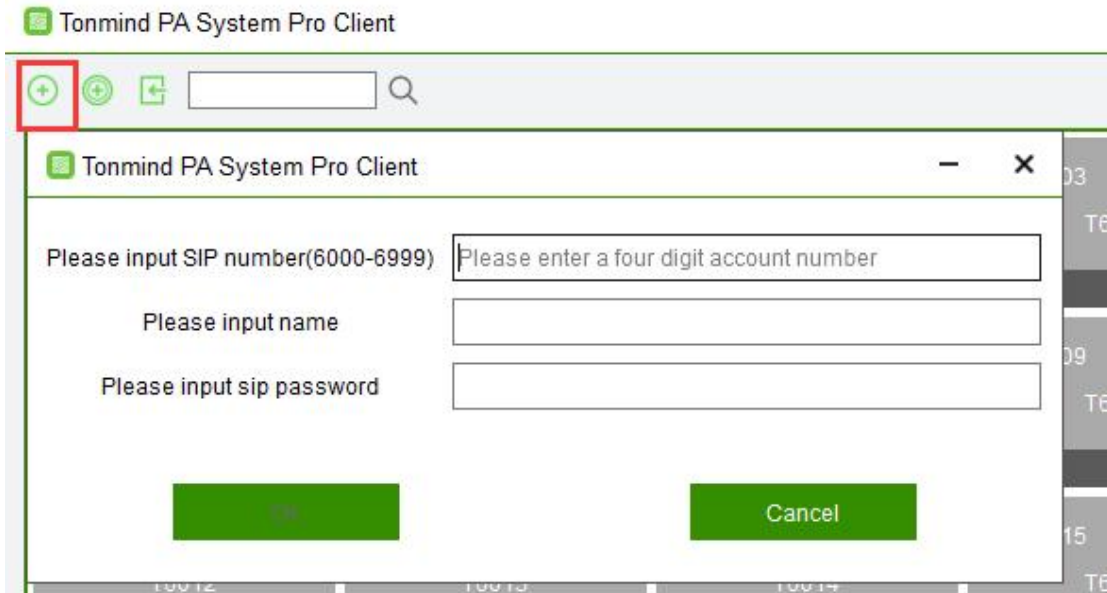
Create SIP Accounts

All IP audio endpoints to be connected to Tonmind PA System Pro support SIP protocol, and each of them needs to be configured with a SIP account.

Please click Devices -> go to setting screen, here on this page you can create one SIP account at a time or you can bulk create SIP accounts.



To create a single SIP account, please click on the  button., then Click OK to save the specification.

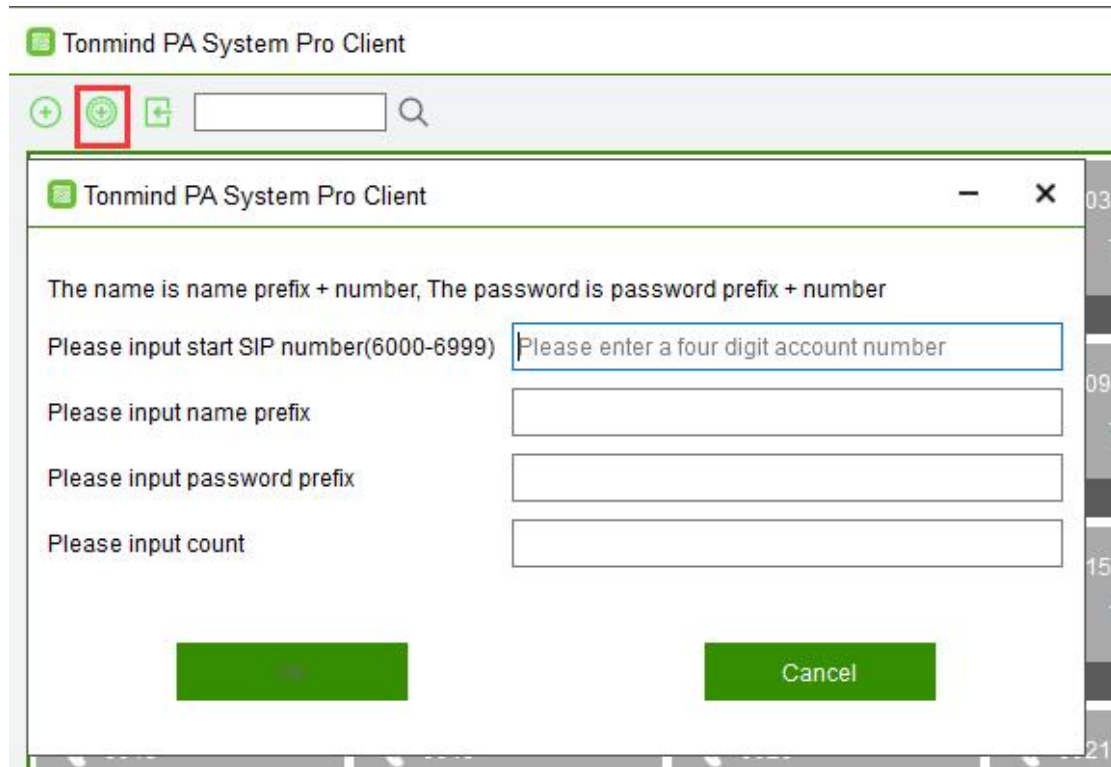


- SIP Number: The SIP account number to be used by an IP audio device, for SIP register and calling.

- Name: Create a name for the device as need.

- Password: The password to be used for SIP register.

To Create bulk SIP numbers, please click on  button, button., then Click OK to save the speciaficaton.

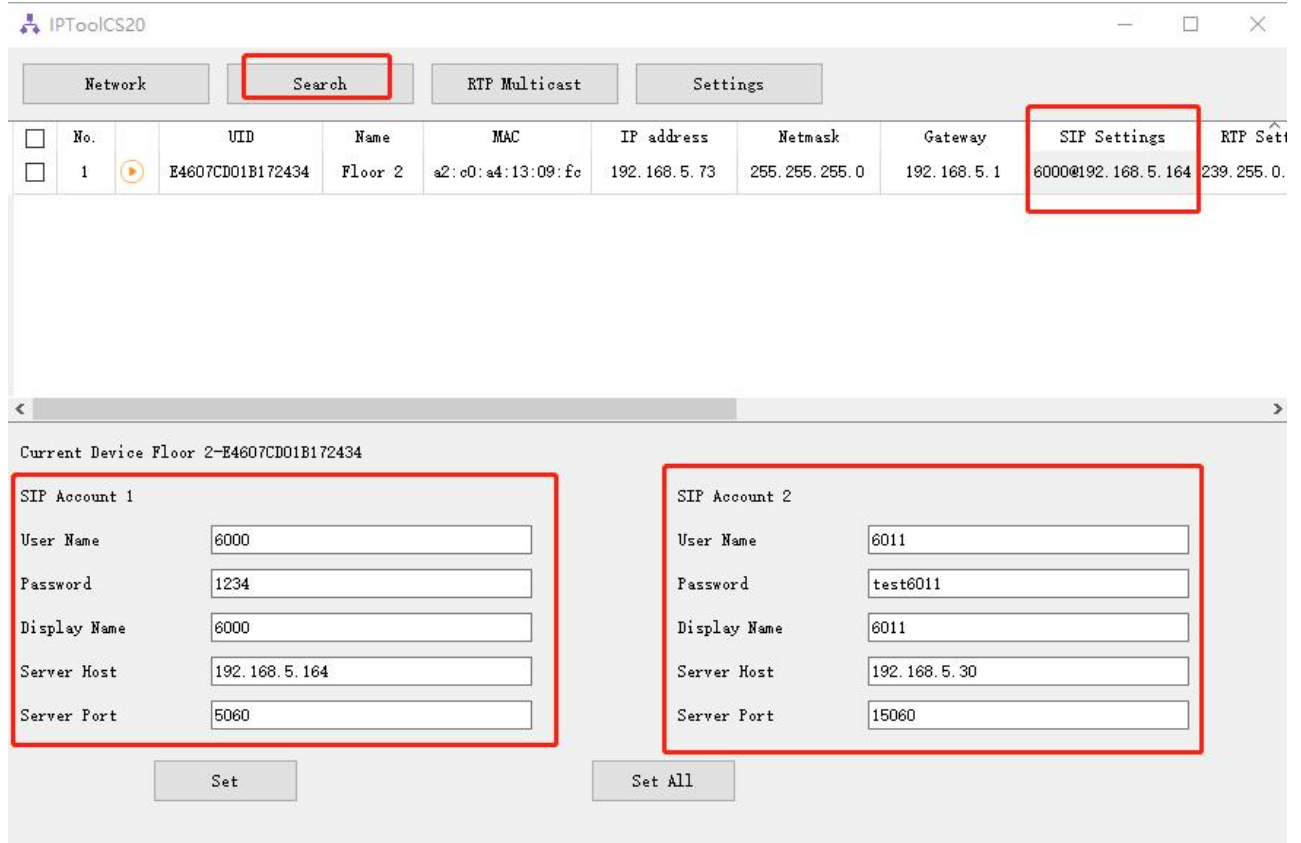


- Start SIP Number: The Start SIP account number to be used by an IP audio device, for SIP register and calling.
- Name: Creat a name for the device as need.
- Password: The password to be used for SIP register.
- Count: How many device SIP number you want to creat, for example if the start sip number is 6000 and the count is 5, then here will creat five sip number to be 6000, 6001, 6002, 6003 and 6004.

Setup IP Audio Devices

There are 2 steps to register an IP Audio device to the Tonmind PA System Pro. Here we take SIP-S01 Network Speaker as an example.

First use our IP Tool to set up the SIP setting for speaker SIP-S01,by using our IP tool to search the device and then click SIP setting. There each device could set two SIP number.

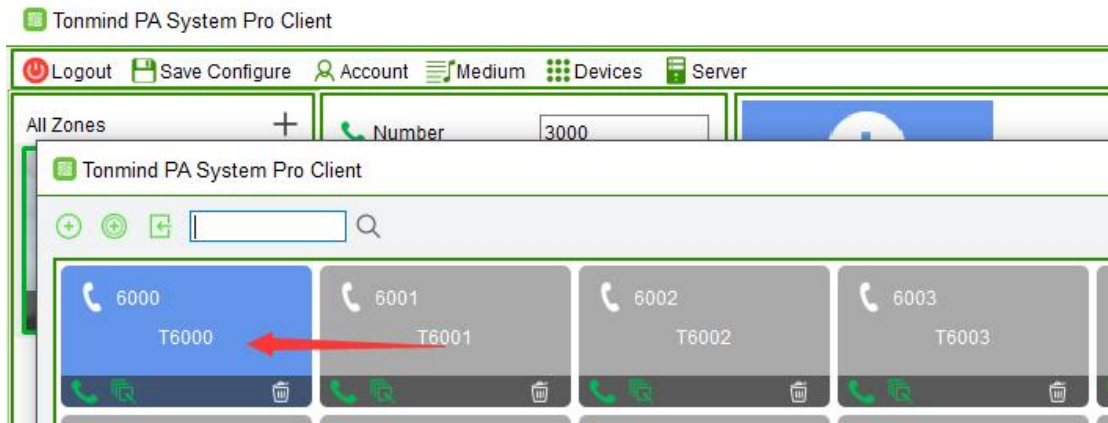


- User Name: SIP number register and calling.
- Password: The password to be used for SIP register.
- Name: Creat a name for the device as need.

Server Host: Server IP

Server Port: Default to be 5060.

When each IP Audio device sends register requests to the Tonmind PA System Pro, the device number, device type, device model and MAC address will be sent to Tonmind PA System Pro as well. Once registered, this device will be found on the Tonmind PA System Pro and also web interface, after success register, the corresponding SIP account color will change to be blue from gray.



Addition: Setup IP Phone and Soft Phone

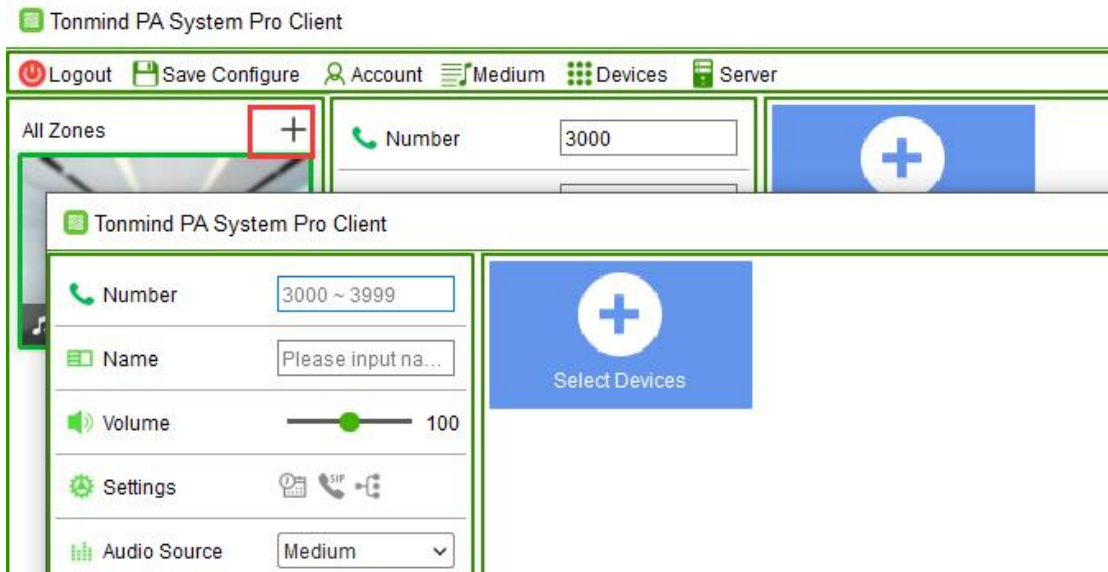
It is the same as above setting of IP Audio Devices, go into the web interface of the IP phone or soft phone, after finish the required information of SIP number, name, password, server IP and port, then it will send the message to Tonmind PA System Lite and if succeed, the correspondig server SIP account will change to blue, and it will be able for calling.

Setup Paging Zones

After registered all IP audio endpoints to the Tonmind PA System Lite, next step you have to group them. A group/zone can be the IP audio devices of a specific area or a same type of IP audio devices.

By grouping the IP audio devices, you can achieve group (zone) -based SIP paging, music, notification, etc.

To create paging groups, at the place of all zones , click the **+** to add zones.



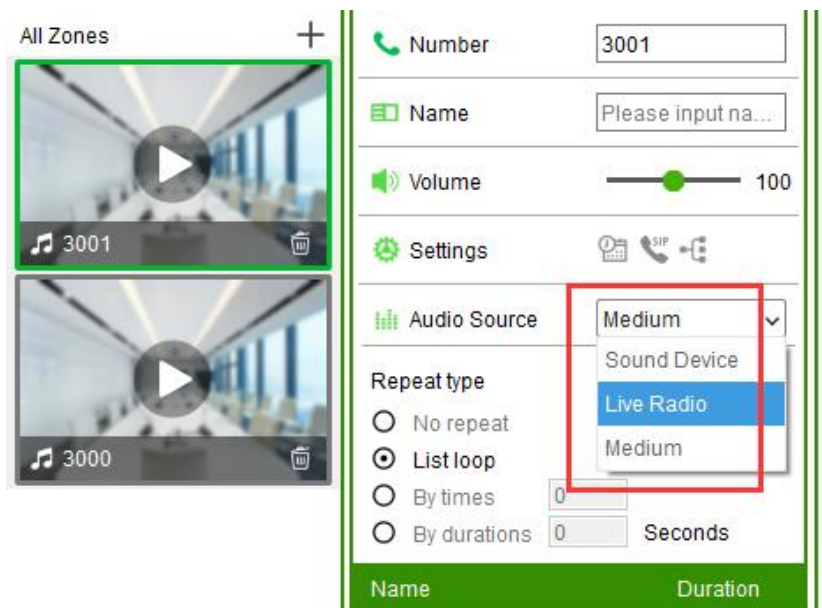
- Number: number can be dialed from an IP phone or other SIP IP audio device to make live announcements to this paging group.
- Name: A name to identify this group.
- Select Devices: Select the member devices of this group.

Zones Control

After finish creating zones, there are some introduction of each zone controlling and functioning.

Voice source option

There are three kind of voice source, and Define to be : Sound Device, Live Radio and Medium.



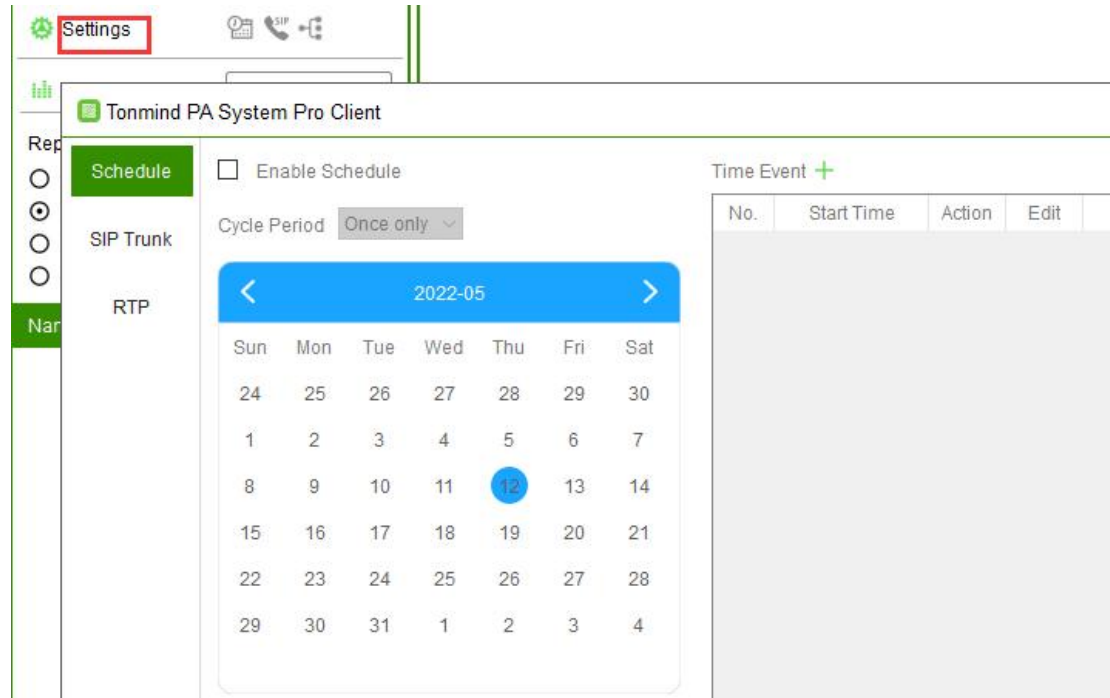
- Sound Device: two source, one is live microphone in, and the other one is the server could detect the signal from outside radio or music player like spotify and then auto

playing

- Medium: Local file and support MP3
- Live Radio: Search the Radio weblink from Internet and copy to play

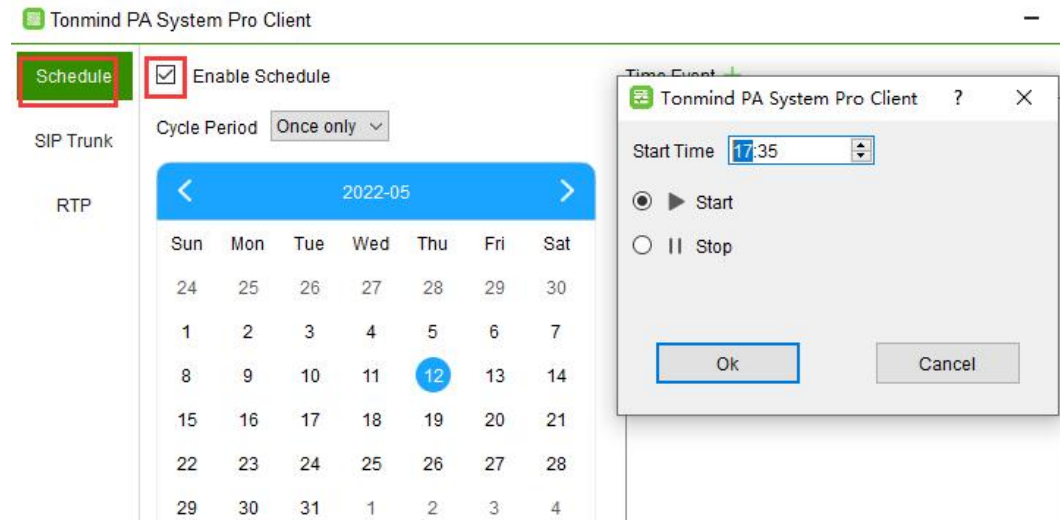
Settings of schedule, SIP trunk and RTP

Click Settings for schedule, SIP trunk and RTP set.



Schedule

Click the Enable Schedule button to choose the cycle period as need, then set the time event when to start or stop.



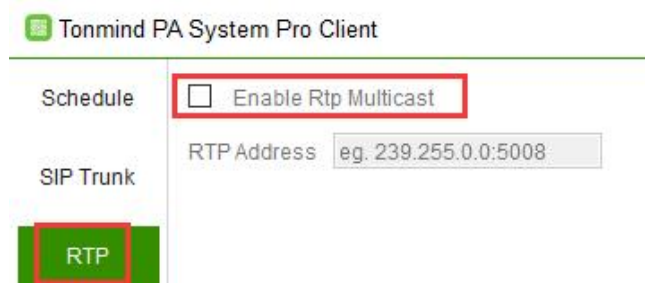
SIP Trunk

When need to integrate our server Tonmind PA System Lite to other IP-PBX or some other SIP server, need to set SIP trunk as below, the thirty party server IP, port and nubmer and passwork and two others as you need, then it will be connecting to other devices and server.



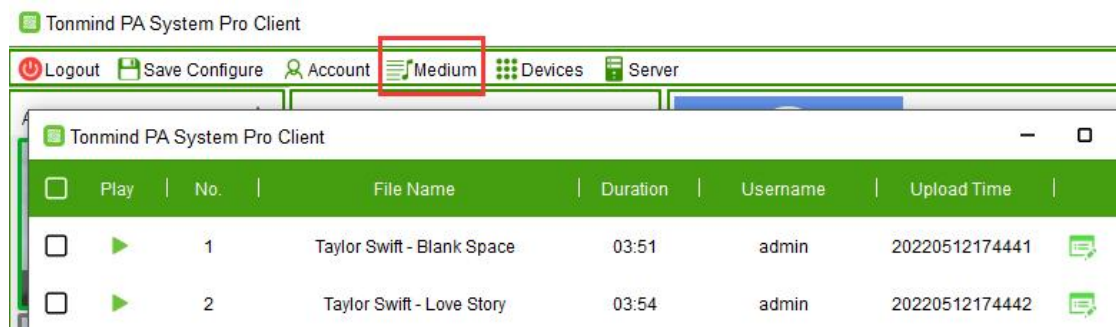
RTP

And if some IP device do not have SIP number, it also support RTP Multicasting to them.



Local audio management

If you have many local audio file, by click Medium you could add to list and convenient to manage play.



How to Get License Key

- Enter option-"about".
- Copy the machine code to us by e-mail: sales@tonmind.com or contact Tonmind sales directly.
- We'll send a license key to you after receiving machine code, active it then license works.

